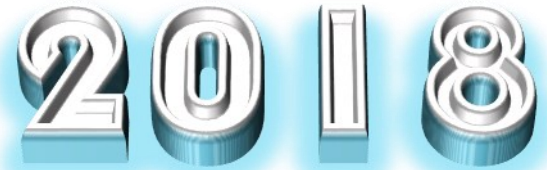


Dear Parents and Carers,

A week last Thursday seemed to be a shock to the system for some pupils—having to be up and thinking by 8.45am! However, there were many who were bright eyed and wished me a happy new year as they came through the gate.



The Lord is with me; I will not be afraid.  
*Psalm 118: 6*

The day before the pupils returned we received our Christmas present—a new minibus! It is as large as the Ford Transit (but nowhere near as old as the LDC which we relieved of duty last summer) and has a more flexible seating arrangement inside. The seats are fitted with comfortable seat belts and there are some useful features for our drivers. Pupils will be glad to hear that there is DAB radio. The graphics on the outside certainly reflect our school.

Within these pages you will be able to read about the arrangements for this term’s school musical. A record number of pupils have volunteered to take part, both on stage and backstage. For pupils who need to take part in rehearsals, it is vital they are there whenever needed, so we shall post the coming week’s commitments in The Insider.

The workshop sessions for Year 6 are starting too. Remember, we want our pupils to be well prepared for the SATs in May, but we do not want to put pressure on them. I hope those who will benefit from these extra sessions will take part, even if it is just to feel more confident about the work they have already done. English writing pieces will be on-going for Year 6, and the SPaG (spelling, punctuation and grammar) continue to be important across the school.

If you have friends or family who wish to state their preferences for first school or middle school places, please remind them of the deadline—Monday January 15th.

Rev C Leach  
Principal

Dear Lord,

Thank you for all the animals, birds, fish and creatures that you have made in this world.

Thank you that you have trusted us with the responsibility to look after these creatures.

We pray for your protection over them and your provision for those animals that are near extinction just as you protect and provide for us.

Thank you for their beauty and their importance in our world.

In your name, Amen.

This week’s theme was:  
**God’s creatures**

And God said, “Let the waters bring forth swarms of living creatures, and let birds fly above the earth across the firmament of the heavens.” So God created the great sea monsters and every living creature that moves, with which the waters swarm, according to their kinds, and every winged bird according to its kind. And God saw that it was good. And God blessed them, saying, “Be fruitful and multiply and fill the waters in the seas, and let birds multiply on the earth.”

Genesis 1: 20-22

**Whole School Attendance – 95.69 %**

**Whole School Target – 95.6%**

**04.01.18—05.01.18**

**Year 5 — 96.82 %**

**Year 6 — 94.94 %**

**Year 7 — 95.83 %**

**Year 8 — 94.96 %**

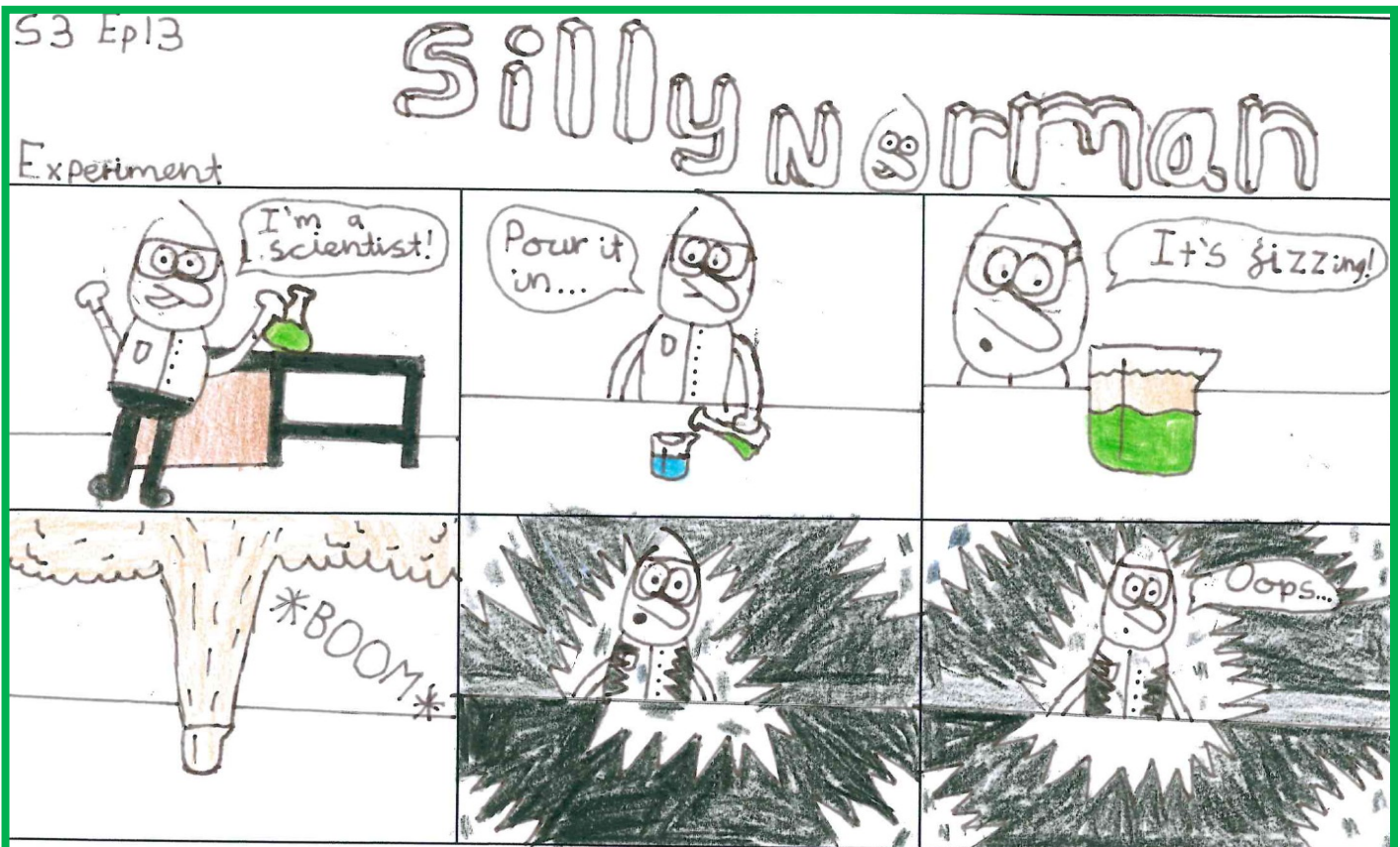


# For the week ahead

<b>The Fruit of Faith is:</b>	<b>Inquisitiveness</b>	Wise men and women are always learning, always listening for fresh insights. <i>Proverbs 18:5</i>
<b>The tutor group virtue:</b>	<b>Creativity</b>	God has filled [his chosen one] with his power and given him skill, ability and understanding for every kind of artistic workmanship. <i>Exodus 35:31</i>
<b>The assembly theme:</b>	<b>Talents</b>	We have different gifts, according to the grace given to each of us. <i>Romans 12:6</i>

## We ask your thoughts and prayers in the week ahead for:

<b>The weekend</b>	people needing access to NHS healthcare.	<b>Monday</b>	pupils and parents in their school preference submissions this year.
<b>Tuesday</b>	medical staff working at The Alex.	<b>Wednesday</b>	pupils and staff of St. George's Church of England First School.
<b>Thursday</b>	Walkwood's Governors.	<b>Friday</b>	all people who attend worship today, in whatever form or faith.





## School applications for September 2018



**DEADLINE**  
**15<sup>th</sup> January**

Applications for places at **middle schools** must be submitted to Worcestershire County Council by **15<sup>th</sup> January 2018**. The same date applies for **first school applications** too.

If you wish to make a preference for a pupil to begin at a first or middle school in September of next year, please ensure that applications are submitted on time.

### Music tuition



As we allow parents to spread the payment cost over the term, the finance office would very much appreciate it if you could work to the payment deadline. If payments have been missed, please 'top up' as soon as possible.

If you have any queries or problems with payments, please contact Mrs Wood, our Finance Manager, or Mrs Griffiths, Head of Music. We are always happy to help, and can usually find a solution to the problem.



## Year 5 Brecon Beacons Trip

Thank you to all who have been keeping up with the payment schedule for the Brecon Beacons trip.

Just to remind you that the following payments should now have been made:

£50 deposit- by 27<sup>th</sup> October

**The next payment of £50 is required by Friday 19<sup>th</sup> January.**

The final payment of £55 is required by Friday 6<sup>th</sup> April.

Smaller more frequent payments can be made as long as the totals above are paid by the dates stated.

If you have any further queries regarding the trip, then please do not hesitate to contact either of us at school. Nearer the time, we will be holding an information evening where you will be given a kit list and all other necessary information.



Mrs L Cull and Mr M Macdonald



Update

After the first round of auditions for our school production, Seussical the Musical! , with a staggering **170 pupils** from across all four year groups, we then held some call-back auditions for some of the lead roles. Thank you once again to everyone who auditioned. We were blown away by the number of people wanting to take part and the standard of the singing.

**Every single person who auditioned and wants to be in the show has got a place.**

We have now decided on those who will play some of the lead roles within the show and this was published to the pupils. However, please note that even if they were not awarded one of these roles, there are still a number of other solo, duet and group parts, for example The Grinch, Thing1&2, the jungle animals and the Who's, which haven't all been decided on yet. We will be doing this once rehearsals get underway.

Congratulations and thank you once again to everyone who auditioned to take part. Rehearsals and the show are going to be a lot of fun!

## Rehearsals

**Afterschool rehearsals will be on Tuesdays and Thursdays at 3:30-4:45 pm in the Hall.**

**We started on Tuesday 9<sup>th</sup> January with a **WHOLE CAST** rehearsal (for absolutely everyone that wanted to take part).**

**Other rehearsals will take place at lunchtimes.**

**Look out on the Insider every Friday for details of the afterschool rehearsals for the following week and who is involved!!**

We will keep you updated through the Insider regarding future news, and we hope that we will see as many of you as possible at the performances in March.

**Production Team**

**Mrs C Griffiths. Ms Tomes, Miss Cowles.**



**Afterschool rehearsals - 3:30-4:45 pm in the Hall.**

**Tuesday 16<sup>th</sup> January** – The Who's, Mr and Mrs Mayor, The Grinch, Horton, Cat, JoJo  
(Here On Who)

**Thursday 18<sup>th</sup> January** – Citizens of the Jungle, JoJo, Cat, Horton, Bird Girls, Wickershams, Sour Kangaroo,  
Gertrude, Mayzie.

## Music Success

Congratulations to Finlay Smith who has recently passed Grade 2 Tenor Horn.



## Autumn Attendance College Prize Draw

**Congratulations to the following winners:**

**Abberley- James Hollinshead**

**Bredon- Libby Greenhouse**

**Cleeve- Adrian Lyszcz**

**Malvern- Heidi Judge**

**These pupils have each received a Kindle Fire 7 Tablet. Draws were conducted during the College Celebration Assemblies. Well Done!**



## Lily and Leah Paice's Gymnastics Competition.

Leah and I took part in the West Midlands Regional Floor and Vault Competition on Sunday 3<sup>rd</sup> December 2017 at Fenton Manor Sports Complex, Stoke.

Leah entered the competition in the Under 9 girls with her team of 6 and the competition was also an individual competition. I was in the Under 11 mixed team (meaning boys and girls).

It was in a massive room full with people I didn't know and 2 judges at each piece of equipment to score you.

In the morning I was a young leader - I had to set the tables up for the judges, I was a score runner, I had to make the judges tea and coffee and help with the trophy presentation. This is to help me pass my British Gymnastics Young Leadership Qualification.

It was soon Leah and my team's turn to compete on the vault and floor. We had to perform an 8 move floor routine and performed 2 vaults in front of the judges.

I was placed 1<sup>st</sup> overall out of 100 gymnasts and my team got Silver overall. Leah got the Gold overall out of 150 gymnasts and Leah's team also claimed the Gold medal. Leah and I are so proud of our achievement.



**By Lily Paice and Leah Paice**

## Sports News

On Saturday 6<sup>th</sup> January, Bromsgrove & Redditch were involved in the Worcester & Warwickshire County Cross-Country Event at Warley Woods. The Under 13's race was the first race of the day and the two teammates Finnan Robins and Leo Merritt were eager to go.

In the end, both were very successful with Leo coming 4<sup>th</sup> in the County and overall 12<sup>th</sup> and Finnan coming 3<sup>rd</sup> in the County and 8<sup>th</sup> overall. In addition, they qualified for the Inter-Counties in March. At the presentation, Bromsgrove & Redditch ended up winning the gold for the team event with a total of 9 points.



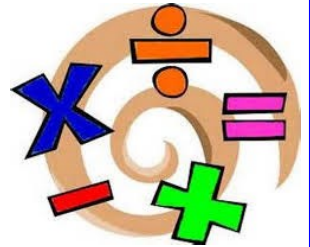
## KS2 Maths Workshop

Thanks to all parents and carers who attended the KS2 Maths Workshops on Monday 4<sup>th</sup> December. We hope you found the evening useful and we were able to answer any queries or questions you had about the arithmetic curriculum.

If you were unable to attend, you can find all presentations and the parents' booklets on the school website:

<http://www.walkwoodms.worcs.sch.uk/> - Parents and Carers- KS2 Maths Workshop

We look forward to see many of you at our KS2 English Workshops on Monday 15<sup>th</sup> January.



## KS2 English Workshop

A reminder that on Monday 15<sup>th</sup> January 2018 from 6:30-7:30pm, we will be holding a KS2 English Workshop for parents and carers. The focus of the evening will be the English curriculum in Years 5 and 6, with a particular focus on the expectations of grammatical and knowledge and reading skills in these year groups. Thank you to those parents who have returned reply slips to say you will be attending (the deadline for the return of reply slips was Wednesday 10<sup>th</sup> January) – we look forward to seeing lots of you there.

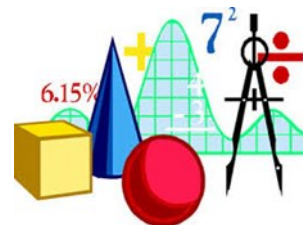
Best wishes

Mrs M Johnson  
Head of English





## Year 6 Maths Revision Sessions



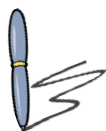
From January, the Maths department will be running revision sessions for Year 6 pupils to support them with their SATs in May. Pupils can decide which sessions they would benefit from. All Year 6 pupils have been given the timetable below so that they can select which sessions to attend.

Pupils will be awarded with an Epraise point for each session they attend. If pupils attend 15 sessions or more they will be awarded with the 'Commitment to Maths SATs' Epraise Achievement Badge.

Pupils should bring a packed lunch or meal deal to the relevant room at the start of lunchtime.

Date	Teacher and room	Topic
Tuesday 9 <sup>th</sup> January	SWa - Room 4	Calculating missing angles
Thursday 11 <sup>th</sup> January	NSa - Room 8	Rounding
Tuesday 16 <sup>th</sup> January	SWe - Room 4	Order of operations
Thursday 18 <sup>th</sup> January	LCu - Room 5	Properties of numbers-factors, primes, multiples...
Tuesday 23 <sup>rd</sup> January	LTh - Room 6	Ordering and comparing numbers
Thursday 25 <sup>th</sup> January	CLo - Room 6	2D shapes including circles and 3D shapes
Tuesday 30 <sup>th</sup> January	DBr - Room 5	Translation and reflection
Thursday 1 <sup>st</sup> February	NSa - Room 8	Negative numbers
Tuesday 6 <sup>th</sup> February	LTh - Room 6	Place value, including x and / by 10,100 & 1000.
Thursday 8 <sup>th</sup> February	LCu - Room 5	Units of measure and converting them
Tuesday 13 <sup>th</sup> February	DBr - Room 5	Measures word problems
Thursday 15 <sup>th</sup> February	LCu - Room 5	Interpreting graphs
Tuesday 27 <sup>th</sup> February	CLo - Room 6	Interpreting tables and mean
Thursday 1 <sup>st</sup> March	LCu - Room 5	Percentages of amounts
Tuesday 6 <sup>th</sup> March	SWe - Room 4	Comparing & ordering fractions (decimals and %)
Thursday 8 <sup>th</sup> March	HMa - Room 6	Equivalent fractions and simplifying fractions
Tuesday 13 <sup>th</sup> March	LTh - Room 6	Equivalent fractions/decimals and %'s
Thursday 15 <sup>th</sup> March	HMa - Room 6	Volume
Tuesday 20 <sup>th</sup> March	DBr - Room 5	Area of rectangles, triangles and parallelograms
Thursday 22 <sup>nd</sup> March	NSa - Room 8	Perimeter
Tuesday 27 <sup>th</sup> March	SWa - Room 4	Co-ordinates
Thursday 29 <sup>th</sup> March	TTo – Room 5	Algebra
Tuesday 17 <sup>th</sup> April	TTo – Room 5	+ and – fractions
Thursday 19 <sup>th</sup> April	LCu - Room 5	X and / fractions
Tuesday 24 <sup>th</sup> April	SWa – Room 4	Written X, including decimals
Thursday 26 <sup>th</sup> April	HMa – Room 6	Written division, including decimals
Tuesday 1 <sup>st</sup> May	TTo – Room 5	Written + and -, including decimals
Thursday 3 <sup>rd</sup> May	LCu - Room 5	Using the inverse
Tuesday 8 <sup>th</sup> May	CLo - Room 6	Word problems involving all operations
Thursday 10 <sup>th</sup> May	LCu - Room 5	Time problems and timetables





## Year 6 English Revision Sessions

From January the English department will be running revision sessions for Year 6 pupils to support you with your SATs in May. You can decide which sessions you would benefit from. Your English teacher will then award you with a merit on Epraise for each session you have attended. **If you attend 15 sessions, you will be awarded a 'Commitment to English SATs' Achievement Badge on Epraise.** You should bring a packed lunch or meal deal to the relevant room at the start of lunchtime.

Date	Teacher/Rm	Topic
Wednesday 10 <sup>th</sup> January	MJO R18	Prefix/suffix/root words
Friday 12 <sup>th</sup> January	MJO R18	Conjunctions subordinating & coordinating
Wednesday 17 <sup>th</sup> January	TPO MOB	Sentence types (command, exclamation, question, statement)
Friday 19 <sup>th</sup> January	RSH R15	Verb subject object
Wednesday 24 <sup>th</sup> January	LBA R19	Colons to introduce a list or another clause
Friday 26 <sup>th</sup> January	ZBI R18	Semi-colons to separate longer items in a list
Wednesday 31 <sup>st</sup> January	NHU R15	Adverbs of time
Friday 2 <sup>nd</sup> February	AGA R17	Semi-colons to separate main clauses
Wednesday 7 <sup>th</sup> February	PCO R16	Inverted commas and their functions
Friday 9 <sup>th</sup> February	CJO R16	Progressive tenses
Wednesday 14 <sup>th</sup> February	TPO MOB	Hyphens and their uses
Friday 16 <sup>th</sup> February	RSH R15	Commas to mark clauses
Wednesday 28 <sup>th</sup> February	LBA R19	Modal verbs
Friday 2 <sup>nd</sup> March	AGA R17	Reading: making an inference
Wednesday 7 <sup>th</sup> March	MJO R18	Standard English
Friday 9 <sup>th</sup> March	ZBI R18	Relative clauses
Wednesday 14 <sup>th</sup> March	MJO R18	Pronouns & possessive pronouns
Friday 16 <sup>th</sup> March	CJO R16	Determiners
Wednesday 21 <sup>st</sup> March	TPO MOB	Simple forms of past, present & future tenses
Friday 23 <sup>th</sup> March	CJO R18	Adverbs of place
Wednesday 28 <sup>th</sup> March	LBA R19	Main & subordinate clauses
Wednesday 18 <sup>th</sup> April	NHU R15	Apostrophes for possession
Friday 20 <sup>th</sup> April	ZBI R18	Synonyms & antonyms
Wednesday 25 <sup>th</sup> April	PCO R16	Reading: making a prediction
Friday 27 <sup>th</sup> April	TPO MOB	Adverbs of manner
Wednesday 2 <sup>nd</sup> May	CJO R16	Subjunctive form
Friday 4 <sup>th</sup> May	RSH R15	Active & passive voice
Wednesday 9 <sup>th</sup> May	RBR R16	Contractions
Friday 11 <sup>th</sup> May	LST R16	Reading: retrieving relevant information



# Top Readers for 12th December 2017 - 12th January 2018

Congratulations to:

## Top Girl

**Baillie Carr** (Year 8 - CAMI) - who has read an incredible 930,981 words

## Top Boy

**Josh Dodd** (Year 8 - CMBI) - who has read a fantastic 468,511 words

Keep reading Walkwood, next week it could be YOU .....

Here is the link to enable pupils to do a quiz at home

<https://ukhosted23.renlearn.co.uk/2250823>



## Hair styles

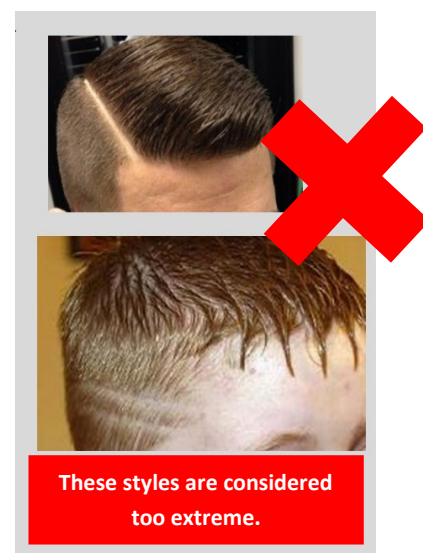
Thank you to all those parents/carers who get in touch with support or suggestions. These help us to improve both the academic and life experiences that your child receives while they are at our school. You can be assured we are constantly reviewing all aspects of our school to ensure your child receives the best possible education.

In support of this, the school has a number of policies which set out the levels and standards we expect for attendance, uniform, behaviour and homework. Copies of these are available on our website, [www.walkwoodms.worcs.sch.uk/](http://www.walkwoodms.worcs.sch.uk/). In depth uniform guidance is also outlined in the pupil planners as well as on the website.

The majority of our pupils respect and follow these policies. However, in recent weeks we have noticed that a small number of pupils are attending school with hairstyles which we do not consider appropriate within the policy, which makes us mention that we do not allow extremes of hairstyles in school. To avoid any confusion, all hairstyles need to adhere to the following guidelines:

- No parting lines, patterns or tramlines should be shaved into the hair or eyebrows.
- Hair should not be shaved shorter than a grade 2.
- No undercuts.
- Colouring is only allowed if it appears natural.
- Hair bands must be plain and only blue, black or grey in colour (no other hair accessories should be worn).
- Hair extensions are not permitted.

Please note that should a Walkwood pupil be found not to be adhering to the above, it may be that they are withdrawn from their normal timetable whilst parents are contacted and the issue rectified. In some cases it may be necessary to send a pupil home to make the necessary adjustments, before returning to their learning. The school's decision in all matters is final.





# Trips and Visits

## 2017 - 18



DATE	ACTIVITY	LOCATION	OPEN TO	COST	LEADER
<b>May</b>					
Fri 18—Mon 21	Outward Bound	Yorkshire	Y6	£ 270	Mr Sanders
<b>June</b>					
Wed 20—Fri 22	Arts and Theatres	London	Y8	£ 280	Rev Leach
Fri 22—Mon 25	Outward Bound	Wales	Y8	£ 270	Mr Jenkin
Fri 22— Mon 25	Outward Bound	Brecon Beacons	Y5	£ 155	Mr Macdonald / Mrs Cull



# Clubs and Activities Spring Term 1 2018

## starting 9th January 2018



	Before School 7:45am – 8:45am	Lunchtime 12.35 – 1.20pm	After School 3:30pm – 4:45pm
<b>Monday</b>	<p>Homework Club Library</p> <p>Orchestra Music Room 8.45-9.30am (CGR)</p>	<p>KS3 Art club starting 18<sup>th</sup> September (ECO)</p> <p>Monday lunchtime DT block Movie club all years (AMI)</p> <p>Gardening Club Textiles room At the start of lunch (STA)</p> <p>Maths Club for KS2 and KS3 Room 6 (HBA and LTH)</p>	<p>Homework Club Library 3.30–4.30pm</p> <p>Indoor Sports Club (benchball, bench hockey, dodgeball, seated volley ball mixture) all years 3.30-4.45pm (DPA and NFR)</p>
<b>Tuesday</b>	<p>Homework Club Library</p>	<p>DT Club in DT block All years (AMI)</p> <p>KS2 Art Club Art Room (ECO)</p> <p>Card making club <span style="color: red;">(invite only)</span> Art Room (STA)</p>	<p>Homework Club Library 3.30–4.30pm</p> <p>Year 5/6 Science club 3.30-4.30pm Lab 1 JHD Starts 12<sup>th</sup> September</p> <p>Seussical the Musical Rehearsal 3.30-4.45pm Hall (TTO, CGR, ECO)</p>
<b>Wednesday</b>	<p>Homework Club Library</p>	<p>Signing Club (All year groups) Textiles Room JHA</p> <p>Silent Reading Club Room 19 (LBA)</p> <p>‘Colouring for Mindfulness’ Club on Wednes- days, Room 9, from 12.50-1.20pm (MMG, PCO)</p>	<p>Homework Club Library 3.30–4.30pm</p> <p>Cooking Club 3.30–4.45pm (DSL) <span style="color: red;">(rota of when you are cooking will be con- firmed)</span></p> <p>8 and 7 Boys Basketball (CHU/SWA) 3.30-4.45pm</p> <p>KS3 Dance Club (KRE/HTR)</p>



# Clubs and Activities Spring Term 1 2018 starting 9th January 2018 (continued)

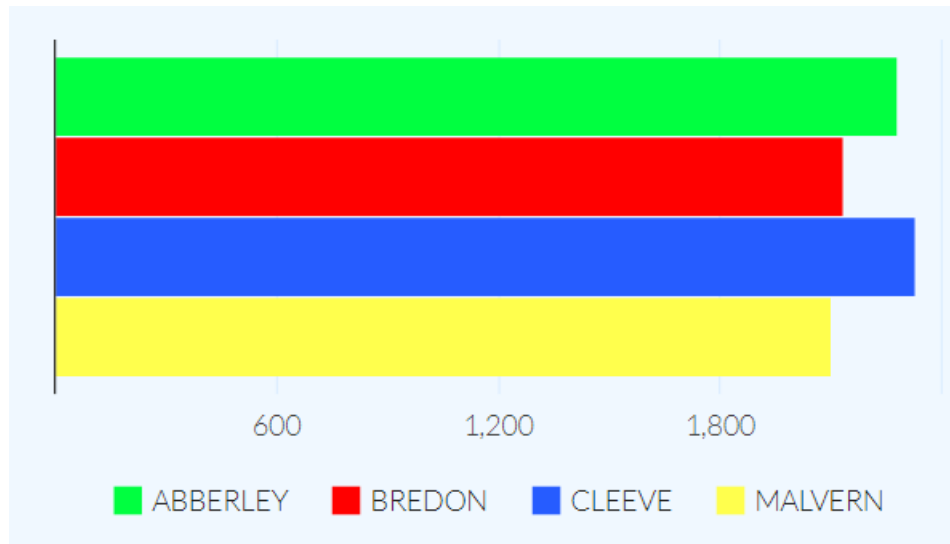


<b>Thursday</b>	Homework Club Library	Choir (all year groups) Music Room 12.50-1.20pm (CGR)  Languages Club 1.00 pm in Room 15 (NHU) To start after October half-term  Green Ambassadors Club All years <b>Week 2 only</b> 12.35 – if you need a lunch pass collect from MBI	Homework Club Library 3.30–4.30pm  Seussical the Musical Rehearsal 3.30-4.45pm Hall (TTO, CGR, ECO)
<b>Friday</b>	Homework Club Library	EAL club Friday lunch time ( <b>the first Friday of every month</b> ). <b>Starts 5<sup>th</sup> January in the LRC with ZBi</b> For anyone who speaks English as an additional language and your friends.  Bring your lunch along.	Homework Club Library 3.30–4.30pm



# Epraise Update

## Points This Week: By College



## Top Ten Points Scorers

1. 🍌 Drew Felton (MKRE) (31)
2. 🍌 Jake Drinkwater (BHLL) (27)
2. 🍌 Eva Greenway (AAGA) (27)
4. 🍌 Freya Harley (AAGA) (26)
4. 🍌 Harvey Anderson (BLBO) (26)
4. 🍌 Charlie Guthrie-Higgins (BLBO) (26)
7. 🍌 Joshua Wright (CCHU) (25)
7. 🍌 Hayden Smith (MNSA) (25)
9. 🍌 Luke Mulla (CCHU) (24)
9. 🍌 Finlay Smith (ARMA) (24)



# Looking ahead



	Date	Event
2 0 1 8	Monday 15 January	Parent English KS2 Workshop 6.30—7.30 pm
	Thursday 1 February	Y6 & Y8 Parents' Evening 4.00—7.00 pm
	Wednesday 7 February	Y6 & Y8 Parents' Evening 4.00—7.00 pm
	Thursday 15 February	Y5 & Y7 reports to Parents / Carers
	Monday 19 – Friday 23 February	<b>Half-Term</b>
	Friday 9 March	Parent Focus Group 2.00—3.00 pm
	Monday 26 - Wednesday 28 March	School Production
	Thursday 29 March	<b>End of term</b>
	Monday 16 April	First day of the Summer Term
	Wednesday 16 May	Y5 Brecon Beacons information evening 6.30 pm
	Monday 28 May—Friday 1 June	<b>Half-Term</b>
	Monday 4 June	Staff Development Day
	Thursday 7 June	Y5 & Y7 Parents' Evening 4.00—7.00 pm
	Wednesday 13 June	Y5 & Y7 Parents' Evening 4.00—7.00 pm
	Monday 9 July	Parent Focus group 6 pm
	Tuesday 24 July	<b>End of Term</b>
	Monday 3 & Tuesday 4 September	Staff Development Days
	Wednesday 5 September	First day of the Autumn Term
	Friday 26 October	Staff Development Day
	Monday 29 Oct to Friday 2 November	<b>Half term</b>
Friday 21 December	<b>End of Term</b>	



# Looking ahead



	Date	Event
2 0 1 9	Monday 7 January	Staff Development Day
	Tuesday 8 January	First day of the Spring Term
	Monday 18—Friday 22 February	<b>Half Term</b>
	Friday 12 April	<b>End of Term</b>
	Monday 29 April	First day of the Summer Term
	Monday 27—Friday 31 May	<b>Half Term</b>
	Friday 19 July	<b>End of Term</b>